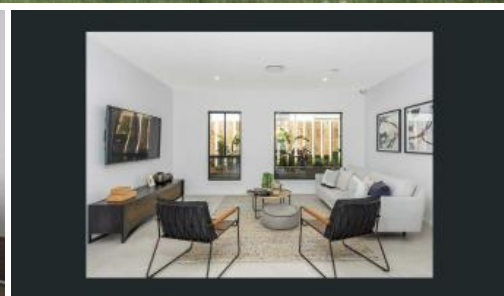


Just Listed



## Townhouse in Tallawong

This contemporary townhouse comes with full turn-key finishes. Easy get to new Tallawong Metro Rail Station and existing Schofields train station, a short drive to Rouse Hill Shopping Centre, and Sydney business park.

### Features

- Contemporary dual level design
- Kitchen with Stone bench top & stainless steel appliances including dishwasher
- Ensuite and built in robe to master bedroom
- Ducted reverse cycle air conditioning;
- Built-in robes with mirror finish
- Gas hot water system, window furnishings, alarm system
- Internal access to garage plus car space
- Storage space, landscaping and fencing

🚗 4 🚗 2

<b>Price</b>	Contact Agent
<b>Property Type</b>	Residential
<b>Property ID</b>	8566

### Agent Details

Ashish Nanda - 0413070431

### Office Details

Angel Properties  
Unit 213 29-31 Lexington Dr  
Bella Vista, NSW, 2153  
Australia  
0413070431



## Transportation

- 2 mins drive away to Tallawong Metro Station (connected to Norwest, Macquarie and Chatswood, 1300 free parking space available) AND Schofield Train Station (Connected to Parramatta, Burwood and City, 700 free parking space available)

## Careers & Businesses

- 10 mins drive away to Norwest Business Park AND Sydney Business Park

## Shopping

- 5 mins drive away to Rouse Hill Shopping Centre

## Education

- Primary School: Schofield Public School, Norwest Christian College, St John's

## Primary School

- Secondary and High School: Riverstone High School, Norwest Christian College,

St John Paul II Catholic College

Check our website and follow us on Facebook to stay updated with more options.

For Inspection: Call Ashish Nanda: 0413070431 Angel Real

Estate: [www.angelre.com.au](http://www.angelre.com.au)

The above information provided has been furnished to us by the vendor/s. We have not verified whether or not that information is accurate and do not have any belief in one way or the other in its accuracy. We do not accept any responsibility to any person for its accuracy and do no more than pass it on. All interested parties should make and rely upon their own inquiries in order to determine whether or not this information is in fact accurate.